



How Can I Meet People? How Do I Get Involved?

You can meet people right here at Transfer Orientation! One of the purposes of having you break into groups by major for the second portion of today's activities is so that you can meet others who are transferring into the same department that you are! Introduce yourself to the people around you, exchange email addresses. These are the people you will be studying with in the next few months.

Student Organizations

<http://www.sorc.pitt.edu/search/index.html>

Intramural/Recreational Sports

<http://www.education.pitt.edu/intramurals/index.html>

Fraternity and Sorority Life

<http://www.studentlife.pitt.edu/orgs/fratandsorority.html>

Pitt Arts Program

<http://www.pitt.edu/~pittarts/>

Student Volunteer Outreach

<http://www.svo.pitt.edu/>

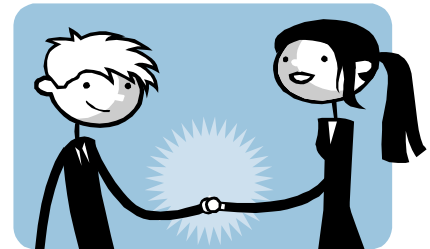
Hang out at the Union!

Join a study group!

Find a coffee shop and ask another student to join you!

Join a student organization!

Initiate conversations before and after class!



Engineering Student Organizations

American Institute of Chemical Engineers
American Institute of Materials Engineers
American Society of Civil Engineers
American Society of Mechanical Engineers
Biomedical Engineering Society
Chi Epsilon Civil Engineering Honor Society
Engineering Student Council
Eta Kappa Nu
Engineering Graduate Student Organization
IEEE
IEEE Computer Society
National Society of Black Engineers
Panther Electric Vehicle
Phi Sigma Rho
Robotics Club
Society of Automotive Engineers (SAE)
Society of Hispanic Professional Engineers
Society of Women Engineers
Tau Beta Pi
Veteran's Action Organization

For more information, go to:

<http://www.engr.pitt.edu/students/organizations.html>